

evoke[®]

RIGID CORE

**UNICLIC (ANGLE/ANGLE)
INSTALLATION INSTRUCTIONS**

Installation Method: with the Patented Unilclic Locking Joint System

PLEASE READ THESE INSTRUCTIONS COMPLETELY BEFORE BEGINNING THE INSTALLATION.

Evoke flooring is designed for easy, snap-together installation. Evoke flooring can be installed:

- in rooms on, above or below ground level
- over plywood, OSB or concrete subfloors
- directly over most existing hard surface flooring
- over radiant heating systems

Installer's / Owner's Responsibility

Evoke flooring is manufactured to highest standards of product quality, but occasional manufacturing defects may occur in the product. It is the sole and joint responsibility of the installer and owner to conduct a quality inspection of all pieces Evoke flooring before installation. Any pieces of flooring that appear to contain a manufacturing defect should not be installed. Flooring that has been installed will be deemed to have been inspected and accepted by the installer and owner, even if the owner is not present at the time of installation. If defects are found, please contact your dealer. It is the sole responsibility of the flooring installer to ensure that the job site, subfloor and installation and materials meet or exceed all applicable industry standards. Evoke accepts no responsibility for problems arising from incorrect or improper site preparation or installation procedures.

SITE PREPARATION:

Installation in new and existing construction.

Installation of flooring is one of the last jobs of a new home construction. Prior to installing a Rigid Core floor, ensure that:

- the building is completely enclosed with all outside doors and windows in place and securable, including a door from an attached garage to house interior
- all concrete, masonry, plastering, drywall, texturing, painting and other wet work is complete and thoroughly cured and dry
- all floor mounted cabinetry (including kitchen islands, bathroom vanities, etc.) is installed and secured
- basements and crawlspaces are dry. Crawlspaces must have no standing water; crawlspaces must also have a vapor barrier and adequate ventilation in accordance with local building codes
- gutters and downspouts are in place, directing water away from the building
- a temperature range of 60- 80° F (15-26° C) should be maintained before, during and after installation (This floor is not sensitive to changes in humidity, but can be affected to extreme swings in temperature).
- subfloor is properly prepared for installation
- if installing over radiant heat, ensure that the system is in full working order and has been fully tested and running for a minimum of two weeks prior to installation. The system should be turned off for 24 hours prior to installation in the install zone.

Installation in Unheated Environments

EVOKE™ Rigid Core can be exposed to temperatures as low as 32°F (0°C) or as high as 100°F (37.7°C). Because of its superior dimensional stability, it can be installed in homes and cottages that will remain closed and unheated during the winter season provided the following criteria are met:

- the subfloor MUST be flat to within 3/16" over a 10ft. span
- at the time of installation the temperature of the area where the floor is being installed is a minimum of 60°F (10°C).
- that the material has been brought into the rooms where it is to be installed to acclimate to room temperature for a minimum of 48 hours. The cartons are to be stored flat and level.
- while living on the floor, a temperature range of 60- 80° F (15-26° C) is maintained

Radiant Heat Systems

Evoke Rigid Core floors are suitable for installation over compatible in-floor radiant heat systems.

It is the homeowner's responsibility to determine if the radiant heat system being considered is compatible for use under the floor being installed. We recommend that the homeowner contact the system manufacturer and get written confirmation that the system is approved for use with Rigid Core flooring and under what operating conditions. If you are unable to obtain this information, please contact the EVOKE Technical Services Team at techserv@metrofloors.com.

Prior to installation, ensure that the radiant heat system is in full working order and has been fully tested and running for a minimum of two weeks. The system should be turned off for 24 hours prior to installation in the install zone.

After installation, EVOKE recommends that the surface temperature of the floor never be allowed to exceed 82°F (28°C) and that changes in temperature be moderated in increments of 5°F (2°C) to avoid 'shocking' the floor.

IMPORTANT NOTE: Prior to flooring installation, ensure that the radiant heat system is in full working order and has been fully tested and running for a minimum of two weeks prior to installation. The system should be turned off for 24 hours prior to installation in the install zone.

Subfloor preparation

Evoke Rigid Core flooring is waterproof but to ensure the health and safety of your home, it is strongly recommended to eliminate all sources of moisture before commencing installation.

The installer and customer are jointly and solely responsible for ensuring that the subfloor is suitable for the flooring application and properly prepared for installation.

All subfloors must be clean, dry, structurally sound and flat to within 3/16" in 10'. When floating over preexisting floors such as ceramic tile, all grout-lines must be levelled with a suitable bonding-filler and inspected for proper adhesion. This will help minimize any "telegraphing" from the floor below.

Wood/Plywood Subfloors must be tested for moisture content according to NFWA guidelines and the subfloor moisture content should not exceed 12%. Subfloors must meet local building code requirements (US: minimum 3/4" T&G plywood or 23/32" T&G OSB. Canada: minimum 5/8" T&G plywood or 3/4" T&G OSB). They must be secure to the joists, free of squeaks, bounce between floor joists and protruding fasteners. Crawl spaces still need adequate ventilation and exposed earth must be covered by Class 1 vapor (such as a 6 mil poly, min. 12" overlapped joints)

Concrete subfloors must be fully cured (minimum 30 days) and have been tested for moisture content using the ASTM F2170 – RH Probe Test standard; the maximum allowable limit of relative humidity within the slab is 85% or, ASTM F1869 – Calcium Chloride Test: the moisture vapor emissions rate (MVER) should not exceed 3lbs / 1000 sq/ft per 24 hours.

If these conditions cannot be met, further curing will be required.

Gypsum-based concrete (eg Gypcrete) subfloors must meet manufacturer's recommendations for dry, cured conditions.

Invoke Rigid Core flooring must be protected from Concrete Moisture Vapor Emissions (MVER). A Class 1 vapor barrier such as a 6 mil thick Polyethylene plastic sheeting is required over all concrete substrates regardless of age.

Acclimation

Before installation, make sure that the flooring is at the same temperature as the install site; depending on the time of year this may take 24-48 hours for the flooring to become balanced to the install sites interior temperature.

Underlayment

Invoke Rigid Core floors have an 'attached pad' or integral underlay, so a separate underlayment is not required when installing these products. Any additional acoustic membrane being considered for use under this floor must be a rigid type approved by Evoke. Use of additional underlayment not approved for these products will void the product warranty. For more information, please contact the Evoke Technical Services Team at techserv@metrofloors.com

Where additional height is required to match an existing floor, a rigid materials such as plywood, OSB, etc. may be used under Evoke Rigid Core floors without affecting the performance or warranty.

All pre-installation preparations such as floor flatness, dryness etc. must be completed prior to installation.

Starting Wall

Orient the installation so the boards are parallel to incoming sunlight, and select your starting wall. Check it for straightness. If it is not straight, you may need to trim the edge of the first row of floor boards to match the shape of the wall. Calculate how many rows of flooring will be required for the job. You will probably have to rip down (cut lengthwise) the final row of boards to fit. The final row must be at least half a board width wide to ensure the integrity of the joint. If it will not be half a board width, then rip down your starting row enough to make up the difference.

Expansion Space

To allow for this, leave a 3/8" (8mm) expansion space around the entire perimeter of the floor between the flooring and the walls. Also leave expansion space where the flooring will meet any vertical obstacle, such as stairs, pipes, door sills, tiles, cabinets etc. Have a supply of 3/8" (8mm) spacers on hand during installation. Areas in excess of over 60' in any direction will require a T-mold transition strip.

Transitions

T-mold transition strips are recommended at all doorway 32" wide or less when installing rigid core click flooring into connected spaces. Failure to use the recommended transitions may result in flooring separations at or near doorways under some circumstances.

Moisture Protection

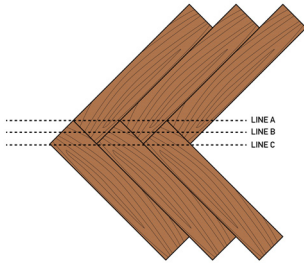
Invoke RIGID CORE floors can withstand exposure to surface moisture and liquid. However, it is recommended that any spilled food, drink or other liquid be cleaned up as quickly as possible. Place trays or mats under any standing containers like plant pots or water dishes. Installations in 'wet rooms' (bathroom, kitchen, laundry) must have waterproof silicone caulking applied wherever the floor meets a vertical object (molding, baseboard, cabinetry) or sits under a standing fixture (sink, toilet, doorframe) The floor is not warranted against excessive exposure to liquid such as flooding, excessive mopping, burst pipes, etc. The floor is not warranted against any exposure to moisture originating in the substrate.

INSTALLATION OF HERRINGBONE

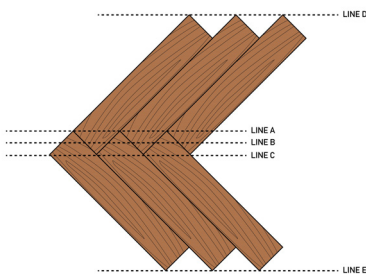
Note: The patented Unilin locking joint system used in this flooring enables boards to be fitted together in two ways. Remember: do not use glue when installing this product.

Herringbone Layout

1. Use reference lines throughout the area that is being installed.
2. Herringbone parquet can be laid out parallel or at a 45-degree angle to the room. Regardless of direction, Herringbone parquet will require a centerline and two working lines.



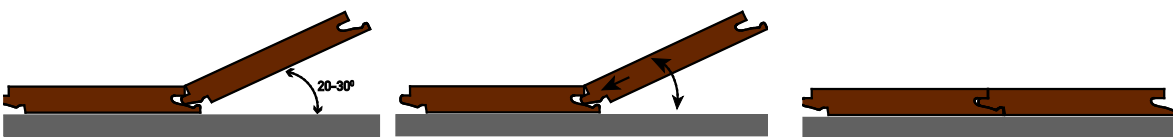
3. Begin by laying out a few alternating slats.
4. Measure the distance from Line A to Line B. Line C should be $\frac{1}{2}$ that distance and run parallel to lines A & B. The centerline of the room and the center of the pattern are represented by Line C.
5. Measure from the centerline C to the ends of the boards on each side of the center and transfer lines D and E to the sub floor.



INSTALLATION

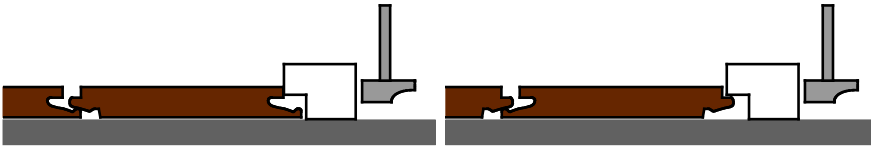
Note: The patented locking joint system used in this flooring enables boards to be fitted together in two ways. Remember: do not use glue when installing this product.

Angle/Angle Installation:



Hold the new board at an angle of 20 to 30° to the previously installed board, and engage the tongue and groove joint at the butt-end of the boards. Move the new board gently up and down while exerting gentle pressure along the long side of the board. The long side joint will click into place, locking the joint. This is the easiest method for installation and should be used for most boards.

Angle/Tap Installation:



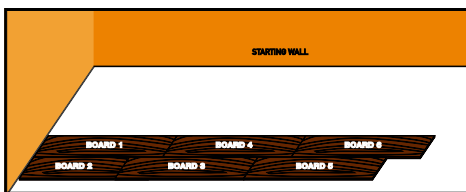
The new board is laid flat on the floor aligned to the previously installed board and, using a specially designed Unilin tapping block (available from your dealer) the boards are tapped together gently until the joint locks. Do not try to close the joint with a single hit on the block; use a series of light taps until the joint closes completely. It is important to avoid damaging the locking system. Broken locking systems are not covered under warranty. This method should only be used in situations where the Angle-In method is not feasible, or for tapping closed joints that have not locked completely.

Open 1 or 2 packages of flooring and inspect boards to ensure there are no manufacturing defects. Remember, boards that have been installed will be deemed to have been inspected and accepted by the customer. Select your starting wall and check for straightness as described above. Decide in which direction you want to install (evolve can be installed left to right, or right to left). This manual will describe a left-to-right installation.

The new board is laid flat on the floor aligned to the previously installed board and, using a specially designed Unilin tapping block (available from your dealer) the boards are tapped together gently until the joint locks. Do not try to close the joint with a single hit on the block; use a series of light taps until the joint closes completely. It is important to avoid damaging the locking system. Broken locking systems are not covered under warranty. This method should only be used in situations where the Angle-In method is not feasible, or for tapping closed joints that have not locked completely.

Open 1 or 2 packages of flooring and inspect boards to ensure there are no manufacturing defects. Remember, boards that have been installed will be deemed to have been inspected and accepted by the customer. Select your starting wall and check for straightness as described above. Decide in which direction you want to install (evolve can be installed left to right, or right to left). This manual will describe a left-to-right installation.

Begin at the left hand end of the starting wall. Have a quantity of 3/8" (8mm) spacers handy. Begin with a full board. Saw off the tongue on both the long and short sides of the board, and place the board with the sawn butt end against the wall on the left, and the sawn long side facing the starting wall, but set out about two feet from the starting wall. Insert a spacer at the left end of the board and nudge the board against the wall.



Take a shorter board to begin the second row, and angle in to position against board 1, fitting together the long side joint. Place a spacer at the left hand end of the second board. Note: Lay a heavy object like a full box of evolve flooring on the end of the first two boards to help keep them in position while you continue the installation.

Install board 3. Hold it at angle and fit the butt end joint into the end of board 2. Drop board 3 slightly to engage the butt joint, then lift board 2 & 3 together and move gently up and down while pressing forward until the long side joint of board 3 locks into board 2.

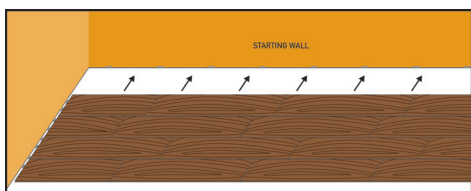
1. Ensure that all butt joints are staggered by a minimum of 6".

Take board 4 and saw off the tongue joint on the long side only. Hold it at angle and fit the butt end joint into the end of board 1. Drop board 4 slightly to engage the butt joint with board 1, then lift board 1 & 4 together and move gently up and down while pressing forward until the long side joint of board 4 locks into board 3. (Kneeling on board 3 while you do this will help hold everything in place.)

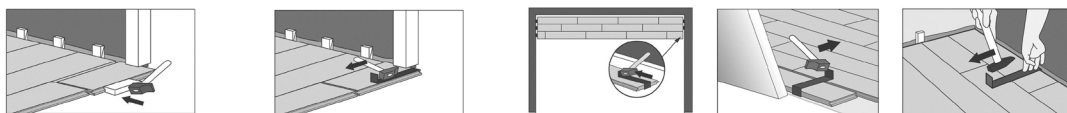
Install board 5 in the same fashion as board 3. Install board 6 in the same fashion as board 4. Continue until you have completed two full rows. At the end of the row, cut boards to fit, but remember to leave expansion space at the end of the row as well.

Note: Start rows with a variety of different lengths of boards. You can also use off cuts from previous row ends to begin new rows, as long as they are minimum 6" (15cm) in length. Remember to stagger butt joints by a minimum of 6" (15cm).

To begin the third row, hold the first board at a 30° angle and insert the long side tongue into the long side groove of the previous row, then lower into place. Ensure the left hand edge is aligned with the previous row and put an expansion spacer between the left hand end of the board and the wall. Use the Angle-In installation method described above to install the rest of the boards to complete the row. Continue installing in this manner until you have completed three or four full rows. Insert a series of expansion spacers along the starting wall and slide the assembled flooring against the starting wall.



If a board cannot be angled into place – if it is under a door jamb or other obstacle, for example – use the flat installation method. Lay the board flat on the floor and, using a special Unilin tapping block and hammer, gently tap along the edge until the joint is closed. Tap gently and repeatedly; do not use excessive force. To close a butt joint, use a series of light taps. To close a long side joint, tap gently and repeatedly along the entire length of the joint.



Continue with the installation throughout the rest of the room. When you get to the final row, measure the distance to the far wall and 'rip' a row of boards to fit the gap – remember to leave 3/8" (8mm) expansion space against the far wall.

That's it! Your new evoke floor is installed! To finish the job, remove the expansion spacers. Install moldings, trim and transitions. Moldings and transitions must be affixed either to the subfloor or to the wall – never to the flooring itself.

Before you move furniture onto the floor, take a moment to protect your new floor by putting felt pads on all furniture and accessories. To learn more about care and maintenance of your evoke floor, please see the Product Warranty.

If the flooring was installed over a radiant heating system, when you turn the system back on bring the temperature of the system up gradually, in 5° increments. Never allow the surface temperature of the floor to exceed 82°F (28°C) and avoid dramatic temperature changes; always adjust the system gradually in 5° increments.

FOR WET ROOM INSTALLATIONS: After installing the moldings, apply a thin bead of 100% water-proof silicone caulking wherever the flooring surface meets a vertical fixture or object (i.e. cabinets, moldings, baseboards etc.). Likewise, where the flooring has been installed under a standing fixture like a toilet, pedestal sink or doorframe, seal the base with a bead of silicone. This measure will help prevent any spilled liquid from making its way to the underside of the planks.

If T-molds were installed to provide additional expansion points in the floor, these too must be sealed with a bead of silicone.

Evoke RIGID CORE should not be installed in saunas, shower stalls or any area where it will be exposed to dampness or high humidity on a regular basis.